

# Suction Cup

## Step-by-step guide



### What you need

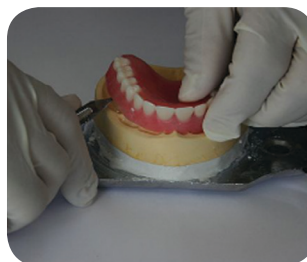
Suction Cup Mandrel	Item#6008-01
Suction Cup Angle	Item#6003-01
Suction Cup Bur	Item#6010-01
Suction Cup Paste	Item# 6002-01
Suction Cup Primer	Item# 6004-01



**1.** Pour up impression with yellow stone.



**2.** Mount model on your standard reline jig.



**3.** Open jig and remove denture from model.



**4.** Grind out inside of denture as you would for a regular acrylic reline.



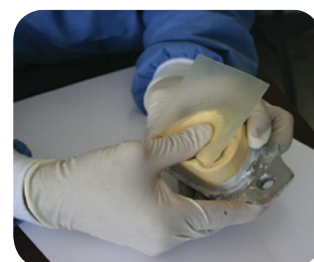
**5.** Pencil around entire model borders, leaving 2-3 mm short of full extension.



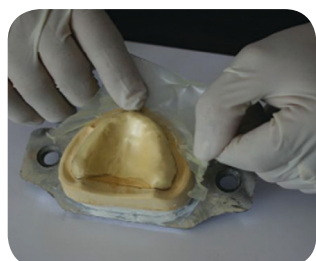
**6.** The model should look like this.



**7.** If relining upper, carve in post dam. Butterfly post dam is recommended, as seen in picture.



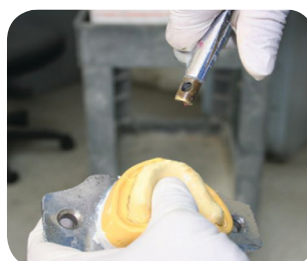
**8.** Put gauge #24 relief wax by placing thumb over palate and folding over excess wax to cover entire model.



**9.** With scalpel knife, cut extra wax at the original pencil line, leaving the 2-3 mm of border and post dam without any relief wax.



**10.** With the relief wax in place, put model in room temperature water for approx. 5 minutes to eliminate all air bubbles.

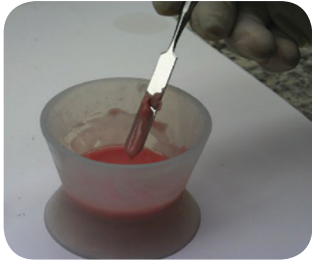


**11.** Remove from water and carefully blow off excess water, while holding thumb over relief wax.



**12.** Paint separator around the borders and post dam areas, and let dry.

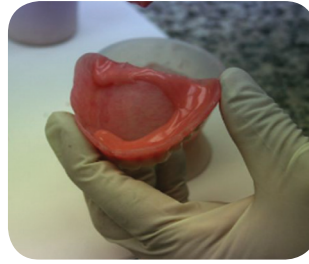




**13.** Mix your reline acrylic.



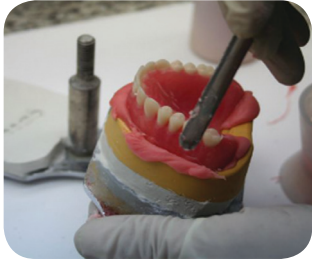
**14.** Place reline acrylic around borders and post dam areas.



**15.** Should look like this.



**16.** Place denture back on reline jig and press, like you would a regular reline.



**17.** Open reline jig and trim excess flow over.



**18.** Put back on reline jig, and clamp down.



**19.** Place in pressure cooker with 15-20 pounds of air for 20 minutes.



**20.** Remove from pressure pot, placing denture in boiling water for approx. 1 minute.



**21.** With knife, carefully remove denture from model.



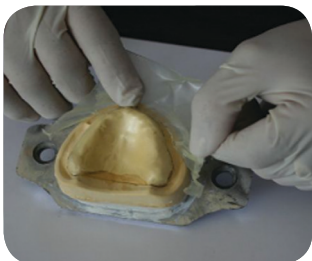
**21.** Wash out model and denture of all wax.



**23.** Clean and wash model with brush thoroughly.



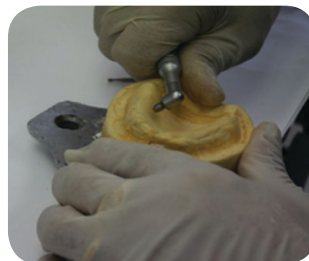
**24.** Trim excess denture borders, as you would for a regular denture reline.



**25.** Roughen, by scraping all areas where wax was previously placed.



**26.** Finish denture by polishing it the way you would for a regular acrylic reline.



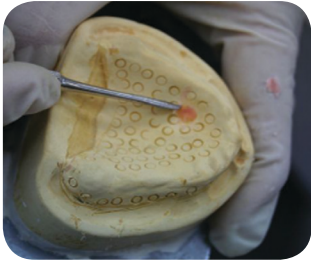
**27.** With suction cup bur, begin cutting suction cups into model in all palatal and buccal areas. Leave the 2-3 mm of borders and post dam areas of the model free of suction cups.



**28.** Suction cups should match model in picture.



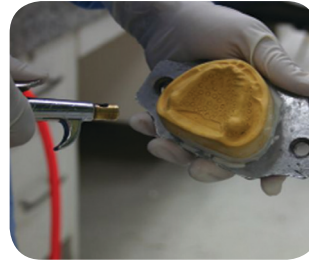




**29.** If any defective suction cups appear over-drilled, they can be covered with wax leaving the area flush.



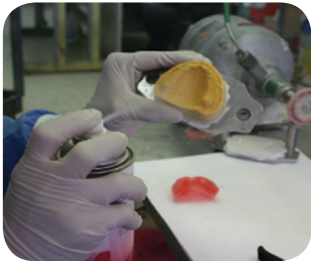
**30.** After drilling all suction cups, it is recommended to clean with steam cleaner. Otherwise use brush to clean model thoroughly.



**31.** Blow off excess water, leaving model dry.



**32.** Paint Suction Cup Primer onto the entire palate and buccal surface without painting post dam area. Wherever primer is placed, silicone will bond. After painting primer let set for 30 sec to 1 min, and repeat process. Let 2<sup>nd</sup> coat set for 1-2 min.



**33.** Spray TCS Mold Release, which will act as a separator. Blow off excess spray with air hose.



**34.** With impression gun, insert silicone into denture with a medium coat around border and entire palate.



**35.** Place back onto reline jig and tighten bolts securely.



**36.** Let bench set for 5-8 minutes.



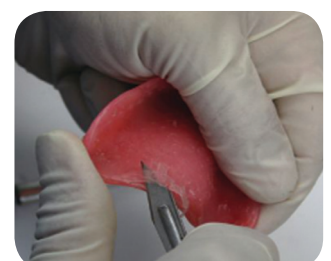
**37.** Open reline jig and remove model from cast.



**38.** With scalpel knife, cut entire excess of silicone remaining.



**39.** If doing upper, be sure that post dam area is free of silicone.



**40.** There will be a light film to be removed over post dam area.



**41.** A light mineral oil coat can be rubbed inside denture to produce high shine. .



**42.** After every 2-3 suction cup cases drilled, hand-piece angle should be oiled. If handpiece gets hot, it should be oiled.

